

Jesús Vassallo

SEAMLESS:
DIGITAL COLLAGE
AND DIRTY REALISM
IN CONTEMPORARY
ARCHITECTURE

With a prologue by Juan Herreros

Architecture at Rice

 PARK BOOKS

8 Prologue by Juan Herreros

14 Acknowledgments

17 IDENTITY THEFT

5 Filip Dujardin vs. De Vylder Vinck Taillieu

69 CONTROL GAME

93 Philipp Schaerer vs. Roger Bolthausen

113 A BROKEN PROMISE

141 Bas Princen vs. OFFICE Kersten Geers
David Van Severen

165 SEAMLESS

Digital Collage and Dirty Realism
in Contemporary Architecture

191 Image credits

195 Biographies



Figure 21: Doge's Palace reinforced to withstand bombing, Venice, ca. 1915.
Photographer unknown.

after all, there is not a definitive answer. They keep looking at this image, a little bit closer and then a little bit farther away. Perhaps these things—ricks, columns— can have several lives, operate in different realms, and these contradictions can never be eliminated. Perhaps, like someone once said, architecture is in the effort of simultaneously zooming in and out, even if it hurts.

CONTROL GAME

Philipp Schaerer vs. Roger Boltshauser

Roger Boltshauser and Philipp Schaerer met in Lausanne, Switzerland, in 1999. Boltshauser, who is slightly older, was the teaching assistant in a design studio taught by the architect Peter Märkli at the École Polytechnique Fédérale, where Schaerer was a student. During this course, and under the influence of Märkli's authoritative voice, Boltshauser and Schaerer developed a relationship of mutual admiration, which eventually transformed into a fruitful collaboration a decade later.

After their short overlap at Lausanne, each of the architects went their separate ways, with Boltshauser focusing on getting his incipient practice off the ground in Zurich and Schaerer graduating and moving on to work for Jacques Herzog and Pierre de Meuron in Basel. During his tenure as a designer at the office of Herzog & de Meuron, Schaerer quickly specialized in the production of digital images for competitions, authoring some of the widely published renderings for the Schaulager project in Basel, the Allianz Arena in Munich, and the National Stadium for the Beijing Olympics. During this period Schaerer also doubled up as the office's knowledge manager, a position somewhere between an archivist and a communication manager, a job title that reflects Herzog & de Meuron's obsession with the problem of the organization of knowledge and their sustained inquiry into the role of images in the architectural project.¹

[Fig. 1]

1. Such combined interests had been advanced in the decade prior to Schaerer's arrival to the office through a series of projects for archive and library buildings and through the firm's sustained collaboration with German photographer Thomas Ruff, which culminated in 1999 with the completion of the joint project for the Library at Eberswalde Technical University.





Figure 1: Philip Schaerer, interior visualization of the Beijing National Stadium by Herzog & de Meuron, 2004.

94 Interestingly enough, it is precisely in the conflation of these two facets of his work for the office of Herzog & de Meuron—the making of images and the management of information—that Schaerer found the raw material with which to jumpstart his own independent career. During his time at Basel, Schaerer started using a media database to collect and keep track of the thousands of digital files that he managed. After he left Herzog & de Meuron, his first independent project consisted in mining his own collection for the production of a series of digital collages.²

[Fig. 2]

BILDBAUTEN

The basic structure of all the works in the *Bildbauten* series (2007–2009) is identical, with a compact architectural object—a n imaginary building—dominating the picture from the center, its elevation on many occasions exceeding the extent of the frame. The construction of these images is reduced to the articulation of a limited number of relationships, namely the way that the building sits on an uninterrupted ground plane and the delineation of a recognizable profile against a uniform sky. The intentional lack of information in the composition of these diagrammatic buildings is then tensioned by the photographic hyperrealism of their textures, in a conflict that our eyes repeatedly try to resolve and that accounts for the captivating and oneiric power of these images.

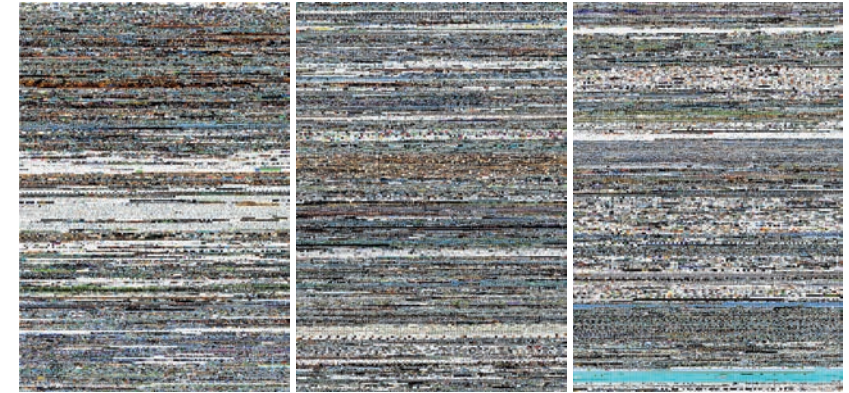


Figure 2: Philipp Schaerer, *Diary* series, 2005–2007.

The remarkable consistency of format and structure in the series allowed Schaerer to in turn introduce and test a great degree of diversity in the content of the images. The basic forms abstracted by Schaerer seem to be selected from a wide range of references, domestic or industrial, natural or infrastructural, even from the world of product design. Similarly, there is a remarkable gradient from hard to soft when it comes to the overall forms of the imaginary buildings, which range from the incredibly precise to the amorphous, testing in the process different degrees of opposition between nature and artifice.

95

[Fig. 3]

Schaerer's first series of collages was a direct development of his dual expertise. His stint at Herzog & de Meuron had allowed him to gain insight on how images are constructed, but also on how they are organized, disseminated, and consumed today, time to reflect on their capacity to operate as vessels for information, as well as on their changing relationship to reality throughout their lifespan. This realization is important to the extent that it sheds light on the different ways in which his work can be read more precisely, depending on whether we try to analyze it in the context of its production or its consumption.

From the perspective of production, one immediate interpretation for Schaerer's *Bildbauten* series is that it operates as a critical response to his own work as a visualization expert for architecture firms, a reaction to the spectacularity and shameless



Figure 3: Philipp Schaerer, *Bildbauten* series, 2007–2009.

commercialism of digital architectural renderings.³ In their frontality and spartan austerity, the images in the *Bildbauten* series can thus be understood as a foil to Schaerer's own lavish images for Herzog & de Meuron, with their forced perspectives and intoxicating atmospheric effects. His artwork becomes instead a voluntary act of contrition through reduction, an analytical interrogation into the minimum components that construct an image.

From the perspective of its reception, however, the *Bildbauten* series relates to the current channels and modes of dissemination for the products of architecture, a complimentary phenomenon similarly enabled by digital technology and defined by the transition from a model based on a few professional publications to a proliferation of blogs and social media outlets, from a model of selection and curation to an oceanic flow of images in perpetual renovation.

Within our digital culture of scrolling or browsing, and in the context of an audience of hyperdistracted readers, architecture projects are forced to introduce themselves in quick succession and with an ever decreasing amount of information, becoming identified in many cases with a single image. Within this development, the *Bildbauten* series offers itself as a response to such reduced attention spans, its voluntary lack of information embodying a strategic adaptation to the new formats and speed with which

culture is consumed today. In our current condition of linking and reposting, where images are replicated beyond any notion of editorial control and supporting texts are hardly ever reliable, Schaerer's mysterious images present themselves as immune to misinterpretation, navigating the ether of globalized information with ease, as perfectly self-contained capsules of distilled architecture.

Looking at the work from the perspective of its dissemination then puts a positive spin on our interpretation, as it provides arguments for the productive effects of the deliberate lack of context and in some cases even scale in the *Bildbauten* series.⁴ Perhaps these images were initially triggered by a need to critique the environment of architectural image production, but in their process of becoming they were emancipated, taking on a variety of other themes and developing a specific mood or personality. Schaerer's voluntary omissions can then be read as intentional, capitalizing on a cultural condition of shrinking attention spans and prevalent loss in translation in order to generate a new aesthetic of simplicity. This reading is reinforced by the innocence found in the work, with its playful approach to profile and form, which speaks to us about an essential or elemental quality to which a sense of new possibility is ascribed.

DOCUMENTARY PHOTOGRAPHY

While Schaerer's *Bildbauten* was born out of impulse and instinct—as is always the case with the first work by any artist—its emphasis on frontality and its typological sensibility soon attracted comparisons to the photography of Bernd and Hilla Becher,⁵ whose images of industrial sheds especially resonate with Schaerer's work.⁶ This resemblance between the two series of images, albeit coincidental, frames the radical change of visual language between Schaerer's work as a visualization specialist for hire and his independent production as an artist: In light of this comparison, Schaerer's

3. In addition to his visualization work for Herzog & de Meuron, Schaerer has also worked and continues to work as a freelance visualization artist for different firms, mostly in Switzerland. A partial list of these works can be found at <http://www.philippschaerer.ch/e/c-visualisations-overview.html>

4. Jes' s Vassallo, "The Inescapability of Scale," *Another Pamphlet* 4 (2012): 1, 12.

5. Bernd Becher and Hilla Becher, *Industrial Façades* (Cambridge, Mass.: MIT Press, 1995).

6. Nathalie Herschdorfer, "La Virtualité de l'Autodéla de la photographie," *Bildbauten*, 2003.

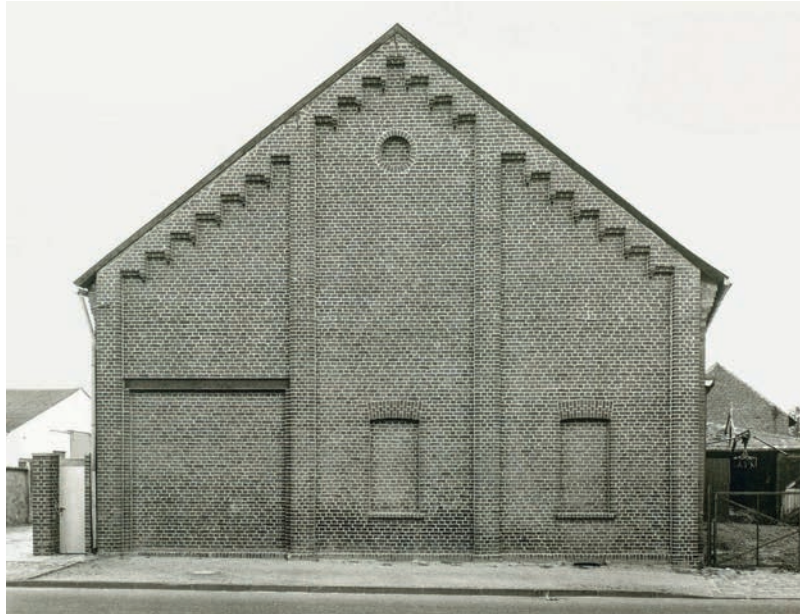


Figure 4: Bernd and Hilla Becher, *Industrial Facades*, 1963–1994.

98 transition can be characterized as a shift away from the commercial logic of professional architecture photography and towards the analytic tradition of documentary photography.

Schaerer's initial interest was in the field of digital technology and more specifically in its application to architecture, but once the link to photography was noted by the critics, Schaerer himself became interested in the documentary tradition embodied in the work of the Bechers, a photographic lineage that can be traced back to the German masters of New Objectivity in the 1920s or the seminal work of Eugène Atget in turn-of-the-century Paris.⁷ This recontextualization of Schaerer's early work within a pre-existing visual tradition is decisive to the extent that it frames all of his subsequent production as an exploration of the displacements produced when a new technology—computer-generated imaging—reenacts the themes and problems rehearsed by a previous one—analogue photography.

[Fig. 4]

[Fig. 5,6,7,8]

Schaerer's series of interior renderings *Raummodelle* (2008) can thus be considered in relation to Atget's images of empty Parisian apartments in their saturation of ornamental surfaces.⁸ Another example of this parallelism is the series of close-ups of digitally generated vegetation titled *Mines du Jardin* (2012), which uncannily possess the same immersive quality of August Sander's landscape photographs taken in the thick of the wilderness of the Wolkenburg forests.⁹ More poignantly, his typologically driven series of still lifes, *Nature Morte* (2010–2011), explicitly refers to Karl Blossfeldt's careful portrayal of plant specimens, as it echoes its ambivalence between scientific description and sculptural insinuation.¹⁰

Among these series of relationships between Schaerer's digital works and their analog references, the *Nature Morte* series offers the most valuable insights—not only because it is explicitly based on Blossfeldt's series of plant photographs, but also because it clarifies the divide between analog and digital modes of operation. We know today that Blossfeldt's interest in nature was instrumental: Despite the scientific flair of his visual language, he never looked at his plants as a botanist, but rather as a craftsman in search of inspiration for the design of nature-inspired ornament.¹¹ Schaerer clearly understands the formal drive behind Blossfeldt's choices and manipulations and sets himself to radicalize this mode of operation. Capitalizing on the weakened indexical link between digital imaging and reality, he departs from the curation of virtual objects found in public three-dimensional model libraries and unleashes their sculptural potential by freely editing their volume and surface texture as independent parameters.

Regardless of whether the connections between Schaerer's computer-generated images and their photographic precedents are intentional or not, what comes across with each of his series is the high degree of specificity and precision with which he

99

7. New Objectivity emerged as a movement in the German photographic scene in the late 1920s as a response to László Moholy-Nagy's *New Vision* and gained critical acclaim through three monographic publications: Albert-Renger-Patz, *Die Welt ist schön* (Berlin: Kurt Wolff, 1928); August Sander, *Antlitz der Zeit* (Berlin: Wolff-Transmare, 1929); and Karl Blossfeldt, *Urformen der Kunst* (Berlin: Ernst Wasmuth, 1928).

8. www.philippschaerer.ch/e/w-raummodelle-1.html

9. In this case, Schaerer had never seen those specific works by Sander, but he surely had seen Thomas Struth's *Paradise* series of rainforest vignettes, which I argue are inspired by Sander's seminal work. www.philippschaerer.ch/e/w-mines-dujardin-2.html

10. www.philippschaerer.ch/e/w-naturemorte01.html

11. Blossfeldt was in fact trained as an artisan and a draftsman in the Arts and Crafts tradition. He was a disciple of Moritz Maurer in Berlin, where he developed his photographic technique as a teaching aid in the context of a live plant modeling class. He customarily manipulated his specimens, cutting them to expose parts that are never seen naturally, or arranged them in multiples as to suggest their application as architectural ornament.

Seamless



Figure 5: Philipp Schaerer, *Mines du Jardin* series, 2010-2011.

Control Game



Figure 7: Philipp Schaerer, *Nature Morte* series, 2010-2011.



Figure 6: August Sander, landscape photographs from the *Wolkenburg* album, 1938-1939.

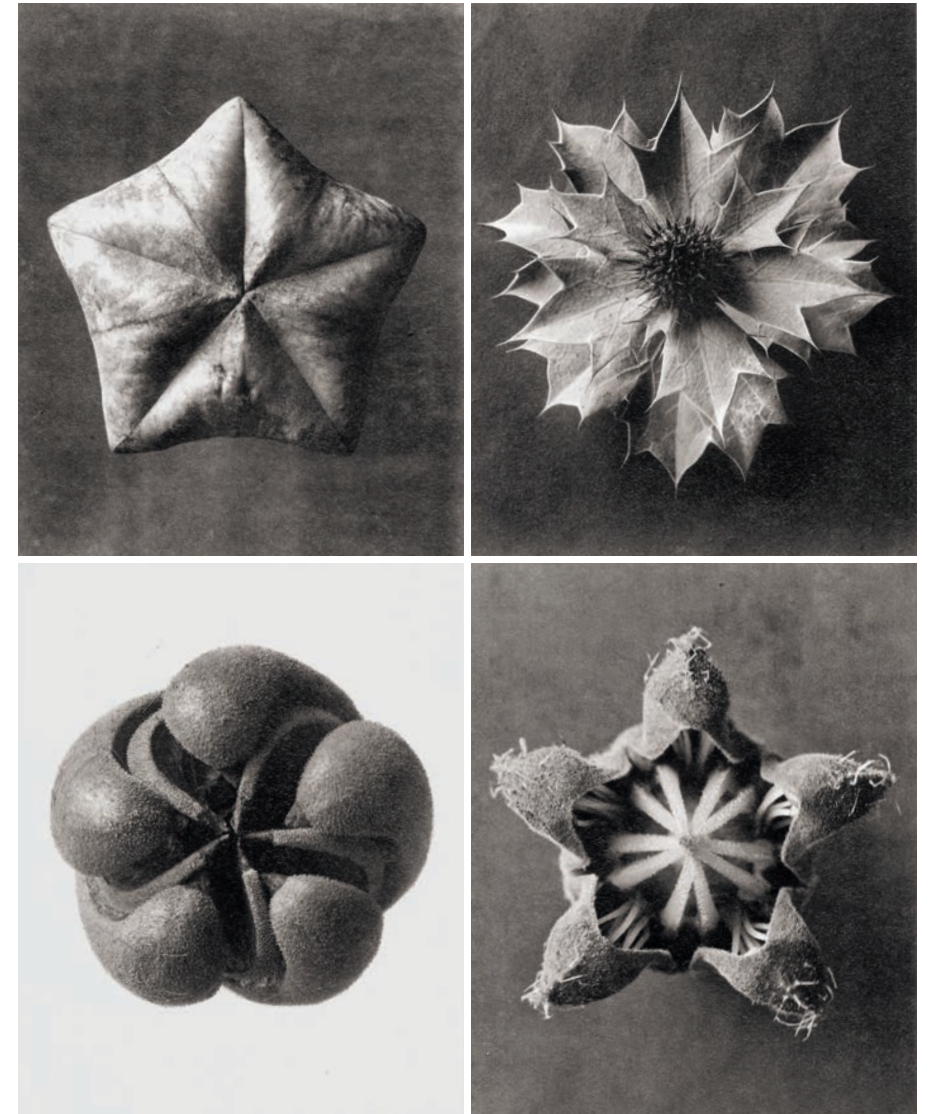


Figure 8: Karl Blossfeldt, Photographs of plant specimens, ca. 1928.

interrogates the processes of construction and perception of an image through the lens of technique. His revisiting of the documentary tradition is thus not aimed at eliciting a criticism or a cultural rereading of the work, but rather an analysis of its inner workings and the possibilities that digital technology poses for its transformation. In Schaerer's work the idea of objectivity inherited from documentary photography is unrelated to a social notion of realism, but rather becomes assimilated to a technical position: a drive for precision and control.

TRANSFORMATOR

It was precisely this high degree of exactitude achieved by Schaerer in his early work that prompted Roger Boltshauser to approach him with a proposition a decade after their first contact. Boltshauser had become fascinated by the visual language developed in the *Bildbauten* series and discerned in it a level of exactness that enabled a certain essential quality to emerge in the images. There was a particular work in the series—number 13, a depiction of an amorphous mass of dark sediment sitting on a barren landscape—that especially attracted Boltshauser as he saw in it a striking similarity with his own experiments with rammed earth construction.¹²

It was late 2011, and as the two architects were seeking opportunities for collaboration, an offer came to Boltshauser to exhibit his work at Architektur Galerie Berlin. Faced with the impossibility of showing architecture in a gallery space, and dissatisfied with the idea of showcasing standard documents such as plans or models, Boltshauser suggested that Schaerer would reimagine the work of his office through the visual language of the *Bildbauten* series,

12. After a discussion about the ideal print size, Boltshauser commissioned a larger custom format print which now presides over the meeting room at his office in Zurich.

13. Finally, all the fourteen images in the *Boltshauser* series are reinterpretations of built projects, except for two. The first image in the group, *Wülflingen*, is a completely imaginary project based on Boltshauser's interest in updating local half-timber construction techniques, which Schaerer developed based on their conversations. The last image, titled *Hirzenbach Hochhaus*, is a rendering of a housing block that was in its early construction stages at the time of the exhibition.

14. Roger Boltshauser and Philipp Schaerer, *Transformator* (Berlin: Ernst Wasmuth, 2012). Exhibition catalog.

15. These castings are refined versions of an assignment that Roger Boltshauser and Aita Flury gave to their students at the Chur Institute of Architecture, in which they asked them to develop casts of both the internal and external spaces of different canonic facades. In addition to Giuseppe Terragni, other architects scrutinized through this exercise were Auguste Perret, Hans Hoffman, Figini e Pollini, and Peter Märkli.



Figure 9: Philipp Schaerer, *Bildbau No 13*, 2008.



Figure 10: Boltshauser Architekten, Haus Rauch, 2008. Photograph by Beat Bühler.

producing in the process a radical transformation of his oeuvre as well as an autonomous body of work.

Originally the project's scope comprised both built and unbuilt designs, in an attempt to capitalize on the power of Schaerer's digital craft to equalize the various stages of development through his representation techniques.¹³ However, and as work progressed through a period of almost a year, both architects gradually decided to focus on revisiting Boltshauser's built projects for the exhibition, fascinated by the capacity of Schaerer's images to bring back the essence of the original design and the possibility that they presented to reopen the work for interpretation, to somehow continue to construct these projects beyond their completion.

The exhibition, fittingly titled *Transformator*, was inaugurated in Berlin in November 2012 and comprised fourteen prints by Schaerer as well as a set of original sketches and four bronze castings by Boltshauser.¹⁴ The massive reliefs, based on volumetric studies of Giuseppe Terragni's main facade for Casa del Fascio, became in their bold massing and deep materiality counterpoints to Schaerer's flat and synthetic images.¹⁵ Interestingly enough, because of lack of space in the gallery, Schaerer's digital prints were mounted on the walls in two groups of pivoting frames carefully detailed by Boltshauser's office with solid bronze profiles, further contributing to the interplay of opposites between the sculptural and the photographic components of the exhibition.

[Fig. 12,13]

[Fig. 9,10]



Figure 11: Philipp Schaerer, *Sihlhälzli 1, Bildmontage*, Boltshauser series, 2011/2012.

While Schaerer's work for the Berlin show was originally conceived as an extension of his first series of speculative collages, the context of the commission induced a number of subtle deviations which developed into a substantially different result. The most relevant of these differences has to do with framing and the relationship to context: While the images in the *Bildbauten* series are almost completely removed, the buildings in the Berlin show are depicted in their actual sites, capturing enough of the surroundings in the frame as to establish a dialectic relationship between the constructions and their environment.

This duality is reinforced by the conflation of two different perspectival systems in each image: the buildings are depicted according to the logic of parallel projection—as pure elevations made from photographic material—and the sites are rendered naturalistically in perspective. This visual paradox points towards a subtle but definitive contradiction between building and context, one that is presented to us as intrinsically irreconcilable, effectively setting up an opposition that becomes the defining trait of the series.

The exactness and lack of hierarchy in the depiction of the buildings— all parts of each elevation are treated equally with a maximum amount of detail— defines a schism between the impenetrable starkness of the projects and the softness and immersive imprecision of their sites. The tension between abstract geometry and photographic hyperrealism of texture, already present in the

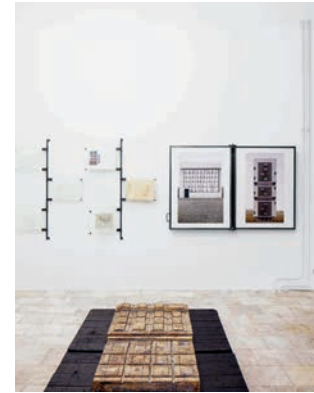


Figure 12: Boltshauser, *Transformator*, Exhibition views, 2012. Photographs by Jan Bitter.



Figure 13: Roger Boltshauser, *Learning from Como*, *Bronzereliefs*, 2012. Photograph by Beat Bühler.

Bildbauten series, here achieves a mesmerizing effect which keeps our eyes moving back and forth between the buildings and the landscape around them, as they snap in and out of synchronicity, in an impossible parallax effect.

The uncoupling of building from context in the *Boltshauser* series is related to Schaerer's capacity to reclaim the finished constructions for the realm of the architecture project. In this case, the reincorporation of the work into architecture is literally equated with its extraction from reality, reinforcing in the process not only an understanding of architecture and nature as opposites but also an insistence on architecture's disciplinarity and autonomy as its essence.

The split between nature and artifice is not solely a product of Schaerer's vision; it is already embedded and to a large extent explicit in the work of Boltshauser, an architect who defines his insistence on the box as a basic form in terms of its capacity to embody the maximum contrast between the man-made and the natural. Similarly, Boltshauser's fascination with Schaerer's exact and measurable photographic constructs reveals a belief that dimension and proportion are the true qualities of architecture, that in fact a project expresses its essence only in its state of absolute geometric precision.

BOLTSHAUSER

It is then in their simultaneous need and capacity for control that Schaerer and Boltshauser find common ground, as both of them

understand their profession in terms of an analytic effort of clarification. This is evident in their willful reduction of the number of elements involved in each work, but also in the rigor put into the articulation and legibility of the relationships between those elements. This analytical drive is also evident in the way that the two architects deal with precedents, in the exhaustive effort of abstraction that allows them to look at history in a way that is detached from cultural readings, focusing instead on identifying a series of primary components and the inherent logics that bind them together.

In the case of Schaerer, this detachment is expressed in the medium specificity with which he interrogates the work of Sander Blossfeldt, or the Bechers, always in terms of the internal construction of the photographs rather than in terms of their critical look on reality or their significance within German culture. A similarly aseptic and analytic use of history is true in the case of Boltshauser, an architect able to discuss Doric temples, Baroque urbanism or Le Corbusier's Ronchamp with equal fluidity, but always through their reduction to a set of solids and voids.

The underlying assumption behind Boltshauser's take on precedents is that the great works in the history of art and architecture are regarded as such because of their capacity to accurately respond to the rules of human perception, a set of rules that have a physiological basis and that remain stable throughout centuries and continents. This preference for the physiological or the perceptual versus the cultural or ideological is of course a highly reductive view, and one that can be argued against in many ways. However, it is highly productive for Boltshauser in that it narrows the scope of his architectural agenda to a very specific and radical proposition: the consideration of mass and its impact on space across all different scales nested in a project.¹⁶ For Boltshauser, the process of design, from site to volumetry, interior organization to detailing, consists of the reiteration of a process where the architect patiently balances a composition with the minimum number of elements possible. This entails a highly sculptural interpretation

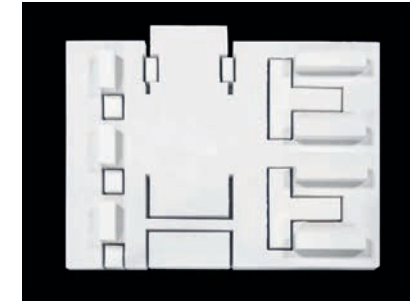


Figure 14: Boltshauser Architekten, Volumetric studies, 2009.

of architecture, one in which all stages and scales of the project are dealt with as interdependent massing exercises.

[Fig. 14]

Despite its willfully reductive *modus operandi*, Boltshauser's work deviates from other strains of minimalism in substantial ways. While his buildings can be compared at times with those of Peter Zumthor, they are different in that they do not rely on a romantic notion of authenticity or an arcane cult of materiality, but rather utilize a wide palette of materials, indistinctly industrial and pre-industrial, authentic and inauthentic, as for example in his juxtapositions of glass brick, adobe, and reinforced concrete. Similarly, Boltshauser's drive for simplicity does not entail an expression of puritan spirituality or starved aestheticism, as is the case with John Pawson, nor does it relate to a notion of estrangement or self-absorption as with his master Peter Märkli.

Conversely, Boltshauser's analytic reductionism departs from a rigorous study of form to derive expression from its manipulation. His architecture can then be characterized as a mannerism in that it assumes that there is always a correct dimension and proportion for a given architectural element which can be derived from technical and compositional considerations, and that the introduction of a certain level of excess or distortion in size is enough to activate the spaces in the project and lend the work its character.

Examples of this mannerist sensibility can be found in all of his projects, from the fat rammed-earth piers and slim concrete

16. This is the concept that runs through Boltshauser's most complete monograph to date. Aita Flury, and Roger Boltshauser, *A Primer to Space: Roger Boltshauser Works* (Wien: Springer Verlag, 2009).

lintels of the school in Allenmoos to the deep sculptural windows at House Rauch, or the massive brise-soleil frames at the sports hall in Hirzenbach. In all of these cases, the architect relies on foregrounding certain elements and exaggerating their dimensions in order to generate rhythm and tension in the work in a way that reminds us of Terragni's mastery of redundancy in Como, but also of Michelangelo's exuberant distortions of scale in the Laurentian Library.

SCULPTURAL VS. PHOTOGRAPHIC

It is precisely through highlighting dimensional precision that Schaerer's vision simultaneously challenges and clarifies the nature of Boltshauser's work, as it allows us to step back for a minute from its overpowering sculptural presence and witness the calculated process of composition through which those effects are achieved. Schaerer's flattened images can then be read not so much as a transformation but a translation, one that enables Boltshauser's intentions to be disseminated through a different medium, while bringing the work closer to a contemporary idiom that privileges photographic abstraction versus sculptural sensuality.

This tension between the photographic and the sculptural is a very present theme in the tradition of documentary photography with which Schaerer is now in conversation. A particularly direct and clear approach to dealing with the sculptural in photography is the case of Blossfeldt, who in his plant studies strived to produce a synthetic depiction of the volumetric object by emphasizing legibility of profile and mass through the use of light and framing. Bernd and Hilla Becher then took this *modus operandi* out of the controlled environment of the photographic studio and used it to elevate a series of anonymous industrial architectures and pieces of machinery to the level of works of art, always based on their perceived sculptural merit.¹⁷

17. While the Bechers initially saw themselves as preservationists, scientifically archiving a disappearing heritage of industrial architecture, it was only when they foregrounded the formal component of their work that they came to be regarded as artists in their own right. The turning point of this process was their 1971 exhibition *Anonymous Sculptures*, held at the Städtische Kunsthalle Düsseldorf. Interestingly enough, years later, in 1990, they received the Grand Prix for Sculpture at the Venice Biennale for their photographic work.

18. Ruff was in fact the first photographer in this lineage to digitally construct frontal views of buildings out of multiple parallel shots, a technique that he first used in his *Häuser* series (1987–1991) and that Schaerer knew through his collaboration with Herzog & de Meuron. Ruff had applied this technique to his famous depiction of Herzog & de Meuron's Ricola Storage Building in Laufen in 1990.

Around the same time, in the early 1970s, another photographer, Lewis Baltz, started to make different use of frontality as a technique inherited from documentary photography. In Baltz's *Prototypes* series (1965–1971), for instance, we find a collection of side elevations of industrial sheds and commercial buildings, abstract compositions in which volume is expressed at the level of a bas-relief, articulated only by the shadows cast by the occasional receding or protruding of a window frame, a gutter or an air conditioning vent. Even closer to our time, Thomas Ruff, in his *Häuser* series (1987–1991), appropriated and radicalized this approach to negate the possibility of sculptural description—as a response to his mentors Bernd and Hilla Becher—by instead using frontality to completely flatten his architectural subject matter, to cancel the legibility of space and volume in the photograph.¹⁸

[Fig. 15,16]

In this light, Schaerer's collapse of Boltshauser's muscular buildings into partial two-dimensional images is simultaneously a logical continuation and a reversal of this historic trend. What the Bechers, Baltz, and Ruff have in common is that they all survey the untutored built environment in search of anonymous fragments to then elevate to the category of works of art. In a way these practices—like much of documentary photography and conceptual art—are about finding an unselfconscious project within their immediate landscape and rendering it self-conscious through their vision, imbuing it in the process with a certain aura. Schaerer's act of flattening, contrarily, takes a work of high architecture with a specific authorial voice—that of Boltshauser—and effectively demystifies it, bringing it closer to the realm of anonymous architecture.

What is interesting in this reversal is that the process of demystification is not perceived as an aggression to the work of Boltshauser, but rather that both the architect and the work seem to enjoy this level of anonymity, this newly discovered banality. Quite fittingly, Boltshauser jump-started and grew his practice with a series of commissions that involved minor buildings, mostly small storage depots and support constructions for existing schools, developing in the process a sensibility for these background constructions.

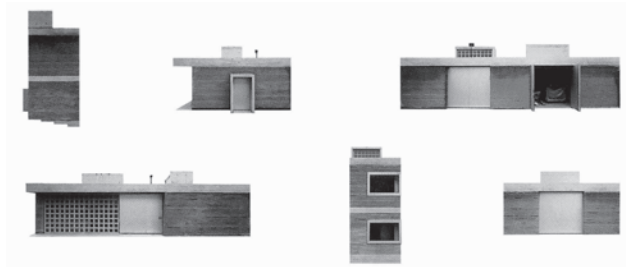


Figure 15: Boltshauser Architekten, Facades of the small buildings at the Sihlhälzli school grounds, 2002. Montage by the architect.



Figure 16: Lewis Baltz, from the *Prototypes* series, 1970-1973.

It is indeed difficult, when looking at these early works by Boltshauser, to tell, for instance, if the use of glass brick is a reference to the *Maison de Verre* by Pierre Chareau or to the Coop supermarket across the street, or if his schematic box-like volumes are responses to a history of modernist abstraction or to the banal landscape of anonymous sheds and housing blocks around them. Similar to his take on history or materials, Boltshauser's take on context is consistently catholic and relaxed, showing clear confidence in his ability to intuitively integrate and restructure different references. In this regard, Schaerer's further abstraction of Boltshauser's work helps to make visible a strategy that boils architecture down to its lowest common denominator in order to enable it to engage its surroundings in a sympathetic and quiet conversation.

Peter Märkli used to say that he preferred side elevations to front elevations, Greek Archaic architecture to Corinthian orders, Romanesque or Protorenaissance to the works of the masters of the Cinquecento. He has also on occasion confessed to a fascination with industrial architecture. Maybe then Schaerer's and Boltshauser's coalescence around the forms of anonymous industrial construction is related to this notion, to the fact that it can be considered as protomodern architecture, a sort of gut instinct modernism, freer to operate intuitively, accept awkwardness, and find beauty in everyday life. Unlike Märkli, however, Boltshauser's lighter approach speaks to us of a condition where imperfection is not an anomaly to be turned into an aesthetic fetish, but rather something that can be assimilated as a prevalent condition. His is an optimistic look on the world around us, a compassionate way to think about how things are, as opposed to how we would like them to be, an architecture of self-acceptance.

A CODA: OZEANIUM

In 2013, Boltshauser was working on the competition entry for the Basel Ozeanium, a large aquarium within the city zoo.¹⁹ The concept for the project was that of a geological cut, with a massive volume simulating the layers of sedimentation of the ocean floor, out of which the aquarium tanks were carved out as individualized voids. This metaphor built on Boltshauser's experience with rammed earth and concrete construction and offered the potential to push it even further: Experimenting with different mixtures and aggregates allowed for a diversity of textures and transformations as the construction became lighter towards the top.²⁰

The scale and the complexity of the material experiments in this project prompted Boltshauser to bring in Schaerer to produce a series of studies trying to foresee how the massive construction

19. <http://www.boltshauser.info/works>

20. This type of construction is an ongoing investigation for Boltshauser, who for more than a decade has sustained a collaboration with Martin Rauch, an expert in earth and clay construction. Most notably, in 2008 Boltshauser and Rauch collaborated on the design and construction of Rauch's house in Schlins, Austria. Roger Boltshauser and Martin Rauch, *The Rauch House: A Model of Advanced Clay Architecture* (Basel: Birkhäuser, 2011).

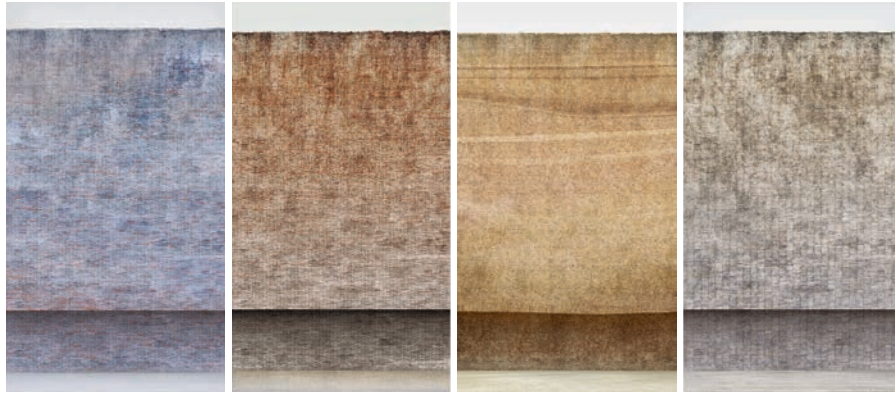


Figure 17: Philipp Schaerer, facade studies for the Ozeanium competition entry by Boltshauser Architekten, 2013.

could be articulated. What followed was a series of images produced as a collaborative work in which the two architects speculated on the desired material alchemy for the project, trying to approximate the effect of the construction and test different materials and transitions between them. In some of these images the whole height of the wall seems to be articulated by a soft and informal accumulation of materials, while in others distinct sections of rock, brick, adobe, or rammed concrete meet along sharp joint lines.

The Ozeanium project revisits the themes that condition the collaboration between Schaerer and Boltshauser and propels them by setting up a more interactive framework in which the two men are active participants in the design process. In Schaerer's facade studies we revisit once again the strong tension between the rational and the irrational, between nature and artifice. This time however, it seems that both poles of the dichotomy have been engulfed by the thickness of the architecture itself. As the earthen metaphor takes over, the nervous flicker between construction and nature that we detected in the *Boltshauser* series is replaced by a slower and deeper pulse, a measure of time that oscillates softly between the architectural and the geological, inadvertently taking us beyond the human.

[Fig. 17]

A BROKEN PROMISE

The following caption information refers to the images compiled at the start of each chapter as a visual essay, by linking each of them to their respective figures in the body of the text.

IDENTITY THEFT

- p. 19 Fig. 1 Filip Dujardin, House 43 by De Vylder Vinck Taillieu, Ghent, 2004.
- p. 20 Fig. 2 Filip Dujardin, from the *Sheds* series, 2003-2004.
- p. 22 Fig. 3 Filip Dujardin, *Fictions*, undated.
- p. 23 Fig. 4 Filip Dujardin, Facade of House 43 by De Vylder Vinck Taillieu, Ghent, 2004.
- p. 24 Fig. 5 Filip Dujardin, From the *Fictions* series, undated.
- p. 26 Fig. 6 Filip Dujardin, *Guimarões*, undated.
- p. 27 Fig. 7A Filip Dujardin, House Rot-Elleberg by De Vylder Vinck Taillieu, Oudenaarde, 2007-2011.
- p. 28 Fig. 7B Filip Dujardin, House Rot-Elleberg by De Vylder Vinck Taillieu, Oudenaarde, 2007-2011.
- p. 29 Fig. 9 Architecten De Vylder Vinck Taillieu, House Belgrade at V, 2011.
- p. 30 Fig. 10 Jeroen Musch, Verzameld Werk Gallery by De Vylder Vinck Taillieu (Jo Taillieu), Ghent, 2001.
- p. 31 Fig. 11A Filip Dujardin, Twiggy Shop by De Vylder Vinck Taillieu, Ghent, 2011.
- p. 32 Fig. 16A Filip Dujardin, *The Exhibition Space as a Pedestal for Itself*, Z33, 2013-2014.
- p. 33 Fig. 11B Filip Dujardin, Twiggy Shop by De Vylder Vinck Taillieu, Ghent, 2011.
- p. 34 Fig. 16B Filip Dujardin, *The Exhibition Space as a Pedestal for Itself*, Z33, 2013-2014.
- p. 35 Fig. 13 Architecten De Vylder Vinck Taillieu, House CG at P, drawing/dwg, 2010.
- p. 36 Fig. 16C Filip Dujardin, *The Exhibition Space as a Pedestal for Itself*, Z33, 2013-2014.
- p. 37 Fig. 8 Filip Dujardin, House Belgrade by De Vylder Vinck Taillieu, Brussels, 2011.

- p. 38 Fig. 17A Filip Dujardin, *Treasures of Nation*, 2014.
- p. 40 Fig. 17B Filip Dujardin, *Treasures of Nation*, 2014.
- p. 41 Fig. 15 Architecten De Vylder Vinck Taillieu, *Huis*, perspectives, 2013.
- p. 42 Fig. 17C Filip Dujardin, *Treasures of Nation*, 2014.
- p. 43 Fig. 14 Filip Dujardin, Rampelken House by De Vylder Vinck Taillieu, Ghent, 2010-2012.
- p. 44 Fig. 19 Filip Dujardin, *Four Columns* by De Vylder Vinck Taillieu, 2013.
- Fig. 20 Filip Dujardin, *Pillar at Stair*, Z33, 2013-2014.

CONTROL GAME

- p. 71 Fig. 2A Philipp Schaerer, *Diary 06.07.2007-08.05.2010*, 2010.
- p. 72 Fig. 3A Philipp Schaerer, From the *Bildbauten* series, 2007-2009.
- p. 73 p. 73
- p. 74 Fig. 3B Philipp Schaerer, *Bildbau N° 17*, 2008.
- p. 75 Fig. 7A Philipp Schaerer, *Nature Morte N° 10*, 2011.
- p. 76 Fig. 7B Philipp Schaerer, from the *Nature Morte* series, 2010-2011.
- p. 77 Fig. 15 Roger Boltshauser, *Small-Scale Spatial Responses of the Facades I*, facades of the small buildings at the Sihlhälzli school grounds, 2009.
- p. 78 Fig. 12 Jan Bitter, *Transformator Architekturgalerie Berlin Ausstellung | Exhibition*, 2012.
- p. 79 Fig. 11A Philipp Schaerer, *Sihlhälzli 3, Bildmontage*, from the *Boltshauser* series, 2012.
- p. 80 Fig. 11B Philipp Schaerer, *Sihlhälzli 2, Bildmontage*, from the *Boltshauser* series, 2012.
- p. 81 Fig. 11C Philipp Schaerer, *Sihlhälzli 1, Bildmontage*, from the *Boltshauser* series, 2012.
- p. 83 Fig. 11D Philipp Schaerer, *Allenmoos 3*, from the *Boltshauser* series, 2012.
- p. 85 Fig. 5A Philipp Schaerer, *Mines du Jardin N° 03*, 2012.
- p. 86 Fig. 2B Philipp Schaerer, *Diary 27.01.2005-06.07.2007*, 2007.

- p. 88 Fig. 13 Roger Boltshauser, *Learning from Como, Bronzereliefs*, 2012.
- p. 89 Fig. 14 Roger Boltshauser, *Learning from Como, Bronzereliefs*, 2009.
- p. 90 Fig. 9 Philipp Schaerer, *Bildbau N° 13*, 2008.
- p. 91 Fig. 10 Beat Böhler, *Neubau Lehmhaus Rauch*, 2008.
- p. 92 Fig. 17 Philipp Schaerer, *Facade Study 130323_VAR-A*, for the Ozeanium competition entry by Boltshauser Architekten, 2013.

A BROKEN PROMISE

- p. 115 Fig. 1(B) Bas Princen, *Marble Quarry*, 1998.
- p. 117 Fig. 5 Bas Princen, Villa in Brussels by OFFICE KGDVS, 2012.
- p. 118 Fig. 2(B) Bas Princen, *End of Highway*, 2004.
- p. 119 Fig. 1(C) Bas Princen, *Garbage Dump*, 2002.
- p. 120 Fig. 4A Bas Princen, Villa Buggenhout by OFFICE KGDVS, 2010.
- p. 121 Fig. 4B Bas Princen, Summer House, Ghent, by OFFICE KGDVS, 2007.
- p. 122 Fig. 6 Bas Princen, *Ringroad* (Findeq/Ceuta), 2007.
- p. 123 Fig. 7 OFFICE KGDVS, *Cité de refuge*, Ceuta, 2007.
- p. 124 Fig. 13(B) Bas Princen, *Botanic Garden (Xiamen)*, 2005.
- p. 125 Fig. 13(C) OFFICE KGDVS and Dogma, *A Grammar for the City*, 2005.
- p. 126 Fig. 8B Bas Princen, *Former Sugarcane Fields*, 2009.
- p. 127 Fig. 15 OFFICE KGDVS, *Border Crossing, MEXÛSA*, 2005.
- p. 128 Fig. 9 Bas Princen, Garden Pavilion by OFFICE KGDVS and Bas Princen, Venice, 2010.
- p. 129 Fig. 10A Bas Princen, Garden Pavilion by OFFICE KGDVS and Bas Princen, Venice, 2010.
- p. 130 Fig. 10B Bas Princen, *City Edge, Istanbul*, 2009.
- p. 131 Fig. 18 Bas Princen, Garden Pavilion by OFFICE KGDVS and Bas Princen, Venice, 2010.

- p. 132 Fig. 14 Bas Princen, Garden Pavilion by OFFICE KGDVS and Bas Princen, Venice, Room 4, 2010.
- p. 135 Fig. 19A Bas Princen, *Dendera*, 2010.
- p. 136 Fig. 19B Bas Princen, *Dendera*, 2010.
- p. 137 Fig. 20A Bas Princen, Wall Pavilion by OFFICE KGDVS and Bas Princen, Shenzhen, 2010.
- p. 139 Fig. 20B Bas Princen, Wall Pavilion by OFFICE KGDVS and Bas Princen, Shenzhen, 2010.
- p. 140 Fig. 20C Bas Princen, Wall Pavilion by OFFICE KGDVS and Bas Princen, Shenzhen, 2010.

0000

Image copyright information

© 2016, ProLitteris, Zurich for the works by Filip Dujardin

© Architecten De Vylder Vinck Taillieu

© Eisenman Architects

© Philipp Schaerer

© Boltshauser Architekten

© 2015, Herzog & de Meuron Basel

© Schirmer/Mosel Verlag

© Bernd and Hilla Becher

© Die Photographische Sammlung/SK Stiftung Kultur August Sander Archiv, Köln / 2016, ProLitteris, Zurich

© 2015 Karl Blossfeldt Archiv/Ann and Jürgen Wilde, Cologne/Artists Rights Society (ARS), NY

© Beat Böhler

© Jan Bitter

© Lewis Baltz Archive at the J. Paul Getty Trust

© Bas Princen

© OFFICE Kersten Geers David Van Severen

© Dogma

© OMA AMO / 2016, ProLitteris, Zurich for the works by OMA AMO

Despite best efforts, we have not been able to identify the holders of copyright and printing rights for all the illustrations. Copyright holders not mentioned in the credits are asked to substantiate their claims, and recompense will be made according to standard practice.

FILIP DUJARDIN (*1971) studied Art History at the University of Ghent, with a specialization in Architecture, before studying Photography at the Royal Academy of Fine Arts in Ghent. After training as a technical assistant for Magnum photographer Carl De Keyzer, he started a professional collaboration with Frederik Vercruyse. In 2007 he established himself as an independent photographer for private and public clients, in the fields of architecture, interior and product design. In 2008 he presented *Fictions*, his first series of independent artworks.

JAN DE VYLDER (*1968) studied Architecture at St Luke's University College of Science and Art in Ghent. From 1997 to 2006 he was collaborator and project manager of Stéphane Beel Architects. In 2000 he opened an office with Trice Hofkens, and since 2007 he has operated under his own name, establishing architecten de vylder vinck taillieu in 2010. Since 2005 he has taught at St Luke's University College of Science and Art in Brussels, and since 2007 as Visiting Professor in numerous institutions, including the TU Delft, Academia di Architettura di Mendrisio, and the Swiss Federal Institute of Technology in Lausanne (EPFL).

INGE VINCK (*1973) studied Architecture at St Luke's University College of Science and Art in Ghent. She worked with Patrice Mottini in Paris from 1997 to 2001 and with Stéphane Beel Architects from 2001 to 2007. In 2008 she started collaborating with Jan de Vylder, and in 2010 she established architecten de vylder vinck taillieu. She has taught at numerous institutions in Europe, including the École nationale supérieure d'architecture et de paysage de Lille, the TU Delft, and the Academia di Architettura di Mendrisio.

JO TAILLIEU (*1971) studied Architecture at St Luke's University College of Science and Art in Ghent and Duncan of Jordanstone College of Art & Design in Dundee. He worked for Maxwan Architects from 1995 to 1996, for Stéphane Beel Architects from 1997 to 2001, and for Stéphane Beel & Xaveer De Geyter Architects from 2001 to 2009. From 2004 to 2009 he also held a parallel independent practice, before establishing architecten de vylder vinck taillieu in 2010. Since 2005 he has taught at the University of Ghent and St Luke's University College of Science and Art in Brussels, and since 2009 as a Visiting Professor at numerous institutions, including the Academia di Architettura di Mendrisio, the TU Delft, and the Swiss Federal Institute of Technology in Lausanne (EPFL).

PHILIPP SCHAERER (*1972) is an architect and *Bildgestalter*. He graduated in Architecture at the Swiss Federal Institute of Technology in Lausanne (EPFL) in 2000, after which he worked as an architect and knowledge manager at Herzog & de Meuron in Basel. He has been the supervisor of postgraduate studies in Computer-Aided Architectural Design & Chair of Prof. Dr. Ludger Hovestadt at the Swiss Federal Institute of Technology (ETH) in Zurich, and since 2010 he has been a lecturer at several universities, with multiple publications and exhibitions of his work in Switzerland and abroad. He lives and works in Zurich and Steffisburg, Switzerland.

ROGER BOLTSHAUSER (*1964) studied Architecture in Lucerne and at the Swiss Federal Institute of Technology (ETH) in Zurich and founded his own practice there in 1996. He started to teach as a research assistant at the Institute for the History and Theory of Architecture (GTA) of the ETH Zurich, and as Peter Märkli's design assistant at both ETH Zurich and EPF Lausanne. He has taught at the University of Technology and Economics (HTW) in Chur since 2004 and at the Chur Institute of Architecture (CIA) since 2005. In 2007 he was accepted as a member of the Federation of Swiss Architects (BSA).

KERSTEN GEERS (*1975) graduated in Architecture and Urbanism at the University of Ghent, Belgium and at the Escuela Técnica Superior de Arquitectura de Madrid, Spain. He worked with Maxwan Architects and Urbanists and with Neutelings Riedijk Architects in Rotterdam. He was Professor at the University of Ghent, and Visiting Professor at Columbia University, NYC and the Academia di Architettura di Mendrisio, and is currently teaching at the Swiss Federal Institute of Technology in Lausanne (EPFL). He is a founding member of the architecture magazine *San Rocco*.

DAVID VAN SEVEREN (*1978) graduated in Architecture and Urbanism at the University of Ghent, Belgium and at the Escuela Técnica Superior de Arquitectura de Madrid, Spain. He worked with Stéphane Beel Architects, Xaveer De Geyter Architects, and for Atelier Maarten Van Severen. He was a teacher and guest critic at the Academy of Architecture Amsterdam, the TU Delft, and the Berlage Institute in Rotterdam, and is currently guest tutor at the Architecture School of Versailles.

BAS PRINCEN (*1975) is an artist and photographer living and working in Rotterdam and recently in Singapore and Zurich. He trained as an industrial designer at the Design Academy in Eindhoven and later studied Architecture at the Berlage Institute in Rotterdam. Since then, through the use of photography, his work has focused on the urban landscape in transformation, researching the various forms, outcomes, and imaginary visions of changing urban space.

JESÚS VASSALLO (*1978) is an architect and writer from Madrid, Spain, currently based in Houston where he teaches at Rice University. He studied architecture at Harvard Graduate School of Design and Escuela Técnica Superior de Arquitectura de Madrid and worked as a project architect in the office of Mansilla y Tuñón Architects between 2006 and 2012. His current research focuses on the exchanges between design and documentary photography in an effort to explore the possibility of a new realism for the discipline of architecture.

Graphic design:
Tres Tipos Gráficos, Madrid

Copy editing:
Kalen MacNamara, Houston

Proofreading:
Lisa Schons, Zurich

Translation of the prologue:
Richard Lewis Rees

Lithography, printing, and binding:
DZA Druckerei zu Altenburg GmbH, Altenburg

Paper: Fly white, 130 g/m²
Typefaces: Marr Sans and Minion Pro

© 2016 Jes' s Vassallo and Park Books AG, Zurich
© for the texts: the authors
© for the images: see image credits

Front cover:
Filip Dujardin, *Pillar at Stair*, Z33, House for Contemporary Art, Hasselt, 2013–2014.
Philipp Schaerer, *Facade Study 130323_VAR-A*, for the Ozeanium competition entry
by Boltshauser Architekten, 2013.

Back cover:
Bas Princen and OFF ICE Kersten Geers David Van Severen, *Wall Pavilion*, 2012.
Photograph by Bas Princen.

Published by:
Park Books AG
Niederdorfstrasse 54
8001 Zurich
Switzerland
www.park-books.com

All rights reserved; no part of this work may be reproduced or edited using
electronic systems, copied, or distributed in any form whatsoever without previous
written consent from the publisher.

ISBN 978-3-03860-019-0

Architecture at Rice is the publication platform of the Rice School of Architecture,
an essential medium for sharing projects and ideas developed at the school
with audiences worldwide. These publications synthesize a broad spectrum of
architectural research into a curated conversation on the current state of the
discipline and its engagement with the world.

Architecture at Rice
Rice University School of Architecture MS-50
6100 Main Street
Houston, Texas 77005
www.arch.rice.edu